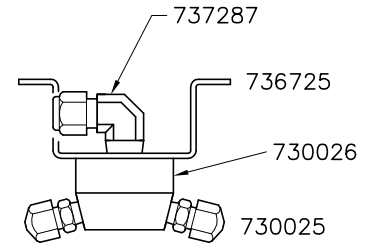


737593

4-Nozzle Block Assembly

Materials : Brass & SS

Include Parts : 730025 x 4, 730026, 736725, 737287

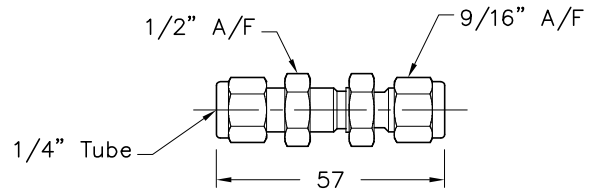


737607

Brass Bulkhead Union 1/4" Tube

Materials : Brass

Use : Connects 2 x 1/4" Tubes Through a Panel Wall



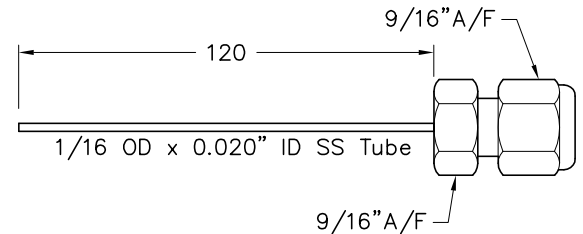
737627

Capillary Nozzle 1/4" SwageLok

Material : Brass

Use : Flexible Nozzle for use with Pestigas Fixed Systems

Spec : 1/4" SwageLok, 0.020" x 120mm Long, 2.0g/s

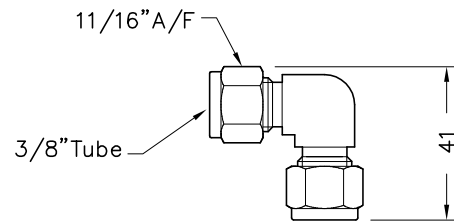


737629

Brass Union Elbow 3/8" Tube

Material : Brass Unplated

Use : Connects Two 3/8" Tubes Together at Right Angles

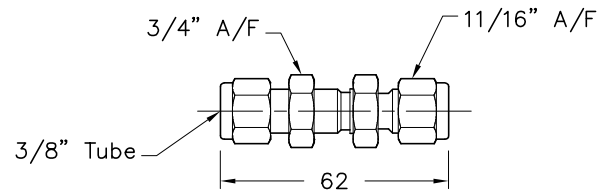


737639

Brass Bulkhead Union 3/8" Tube

Materials : Brass

Use : Connects 2 x 3/8" Tubes Through a Panel Wall

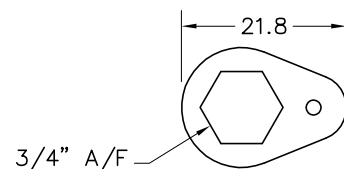


737640

S'Steel Bulkhead Retainer - 3/8"

Materials : SS

Use : Secures Bulkhead Fittings From Turning and Loosening



737641

Solenoid Valve 24VDC x 3/64" Orifice

Material : Nickle Plated Brass Body

Ports : 1/8" BSPT Female

Protection Rating : IP65 Weatherproof Housing

Power Rating : 24VDC 9W

