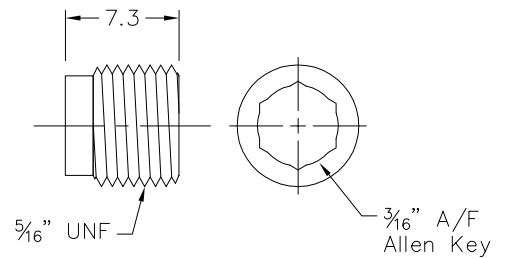


736891

Filter Retaining Screw RB39

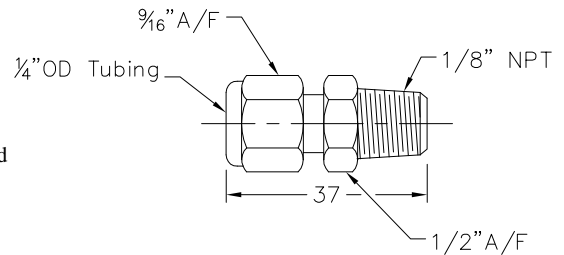
Material : Unplated Brass
Use : To Secure Spigot Filters #736890



736897

Brass Male Connector 1/4" x 1/8" NPT

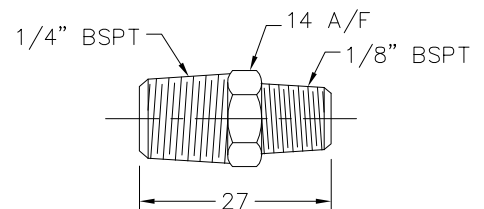
Material : Unplated Brass
Use : To Connect 1/4" OD Aluminium Tube 1/8" NPT FM Thread
Includes : Body, 1off Nut, 1off Ferrule Set



736898

Brass Reducing Hex Nipple 1/4 x 1/8 BSPT

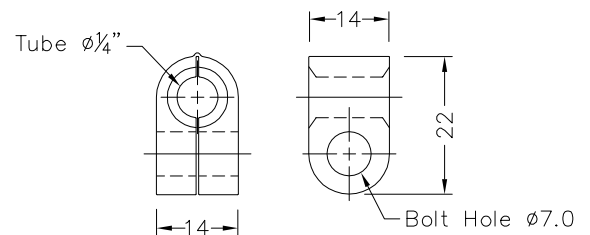
Material : Unplated Brass
Use : General Purpose Reducing Nipple
Weight : 19g



736899

1/4" Pipe Clamp Single Hole

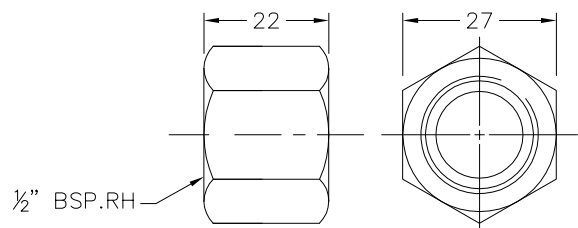
Material : PolyPropylene
Use : To Support 1/4" OD Tube
Includes : Pack of 40



737014

Co2 Cylinder Nut - Type 30

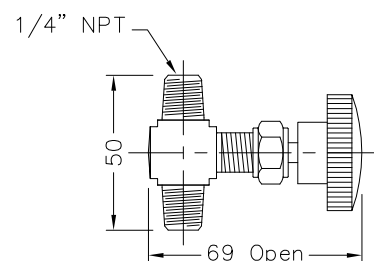
Material : Brass Unplated
Use : Connect To CO2 Cylinder Outlet Thread
Includes : Cylinder Nut Only



737078

Brass Needle Valve 1/4" NPT Male

Material : Brass Body, Kel-F Stem Seat
Use : Used On Spacecontroller Manifold Block
 To Pressurise and De-pressurise the System
Ports : 1/4" Nale NPT



737082

Hex Manifold Wall Mounting Bracket

Material : Mild Steel, Red Powdered Coated
Use : Wall Mounting The Hex Manifold Block #736495

