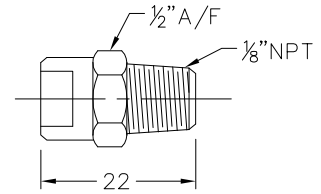


730020

Nozzle 1/8" NPT

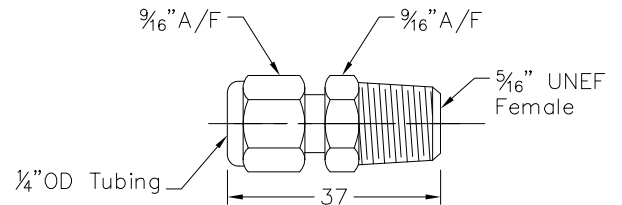
Material : Stainless Steel
Nominal Flow Rate : 6 g/s



730024

Nozzle Adapter 1/4"

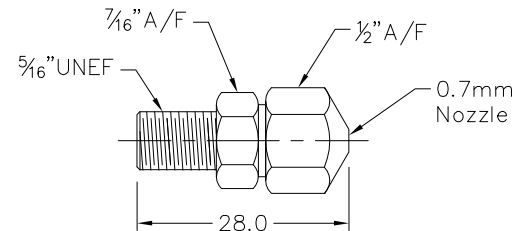
Material : Plain Brass
 Connects Nozzle #730025 to 1/4" Aluminium Tube



730025

Nozzle Fixed System

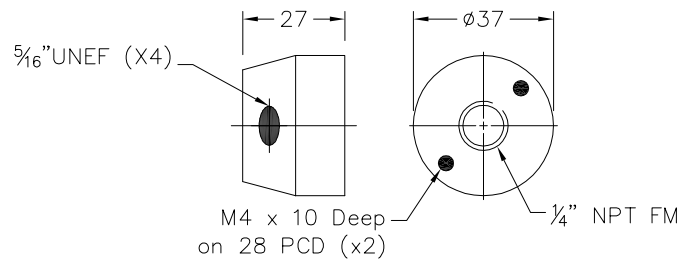
Material : Unplated Brass
 Includes : #736724 Valve Nozzle Core
Nominal Flow Rate : 9 g/s



730026

4 Way Nozzle Block

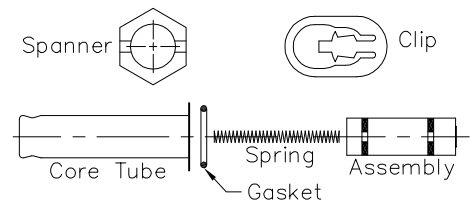
Material : Unplated Brass
 Used To Mount 4 Nozzles #730025
 c/w 2off x Screws M4 x 10Lg



730031

Solenoid Valve Overhaul Kit

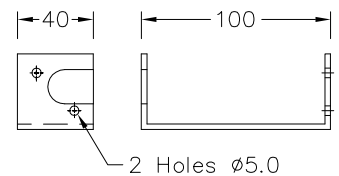
Material : Stainless Steel & Teflon Wetted Parts, Steel Plated Socket
Use : To Upgrade and Repair Solenoid Valve #730016
Includes : Core Tube, Spring, & Assembly,
 Body Gasket, Socket Spanner, Retaining Clip



730033

Solenoid Bracket

To Suit : Solenoid #730016
Material : Anodised Aluminium



730034

Aluminium Tube 30m

Annealed Aluminium [1350-F] Tube 1/4" OD x 1.2mm Wall
 Suitable For EnviroSol Gases, & Low Pressure
 ECO2Fume Gas. Not Suitable For ECO2Fume Liquid.
 Weight 1.4kg/30m Roll, Burst Pressure of 30 mPa

